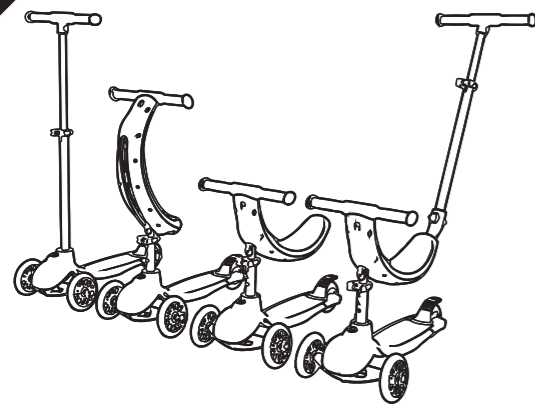


NEW



Ride-Ezy™

4 in 1 Kick & Go Scooter & Ride on Manual

	<p>Stage 1 (1-3 yrs)</p> <p>20kg Max 40lbs Max</p>	<p>Stage 2 (1-3 yrs)</p> <p>20kg Max 40lbs Max</p>	<p>Stage 3 (2+yrs)</p> <p>50kg Max 110lbs Max</p>	<p>Stage 4 (4+yrs)</p> <p>50kg Max 110lbs Max</p>
--	---	---	--	--

PLEASE READ THIS MANUAL BEFORE USE

MODES PRESENTED IN NO SPECIFIC ORDER

PARTS LIST

- 1 Steering-seat unit
- 2 Steering-seat handlebar
- 3 Screw
- 4 M4 Allen key x2
- 5 M5 Allen key x1
- 6 Footplate
- 7 Parent push tube
- 8 Parent push handle
- 9 Connector tube
- 10 Finger screws
- 11 Screw & Nut

INSTRUCTIONS

① Beginners' Ride-on mode- Assembly

(1) Insert the steering-seat handlebar into the top of the steering-seat unit. Insert the screw into the hole and fasten with the allen key as shown in fig.1.

Fig.1
Insert handlebar

(2) Insert the tube under the steering-seat unit into the hole in the front area of the footplate as shown in fig.2.

Fig.2
Steering-seat unit
Tube

Footplate

Ensure that all parts are securely clipped into position.

Fig.3

Slide button

Slide the steering-seat unit

Slide button

Press Slide button down

(3) To slide the steering-seat unit into position, press the slide button down. While keeping the slide button pressed down, slide the steering-seat unit downwards until it clicks into the locking position. Release the slide button.

Locking/ Unlocking of steering mechanism

To assist the beginner rider, the steering mechanism can be locked, preventing the scooter from turning.

To lock press the lock button down and slide forward where it clips in position.

To unlock press the lock button down again and slide the button backwards where it clips in position.

Lock button

Lock steering for ride-on mode

② Stroller mode- Assembly

Attached the parent push handle to the ride-on mode

Fig.4

(1) Insert handle to tube then use (M4 Allen key x2) tighten the screw and nut as shown in fig.4.

(2) Insert the parent push handle into the connector tube by aligning the Alignment block to the hole in the connector tube and sliding it in. Fasten using the finger screws provided as shown in fig.5.

(3) Now insert the connector tube into the steering-seat unit until it clicks into the locked position as shown in fig.6.

Fig.5

Parent push handle

Alignment Block

Finger screws

Connector tube

Insert connect tube

Fig.6

Parent Push Handle

Connector tube

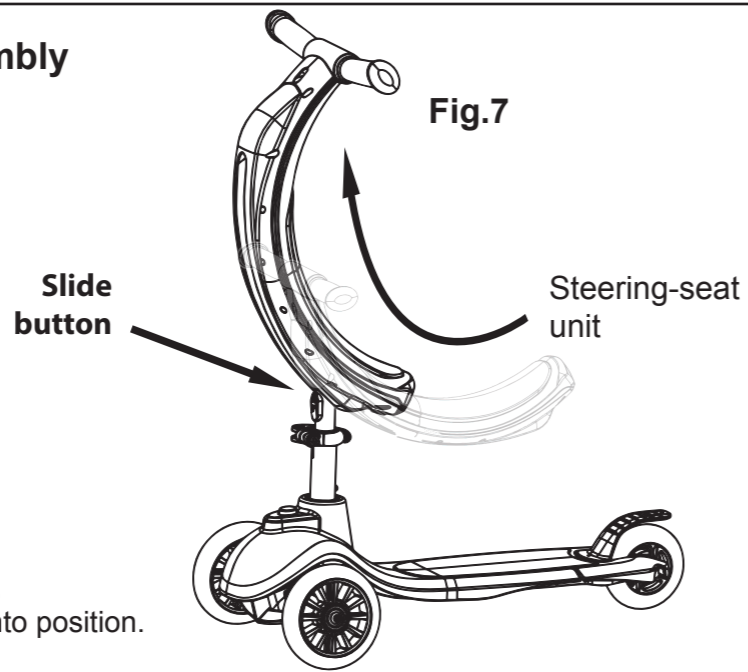
Press Hold

3 Beginners scooter mode- Assembly

Slide steering-seat unit

(1) While keeping the slide button pulled down, slide the steering-seat unit upwards until it clicks into the locking position as shown in fig.7.

(2) Let go of the slide button and ensure that the steering-seat unit is secure.

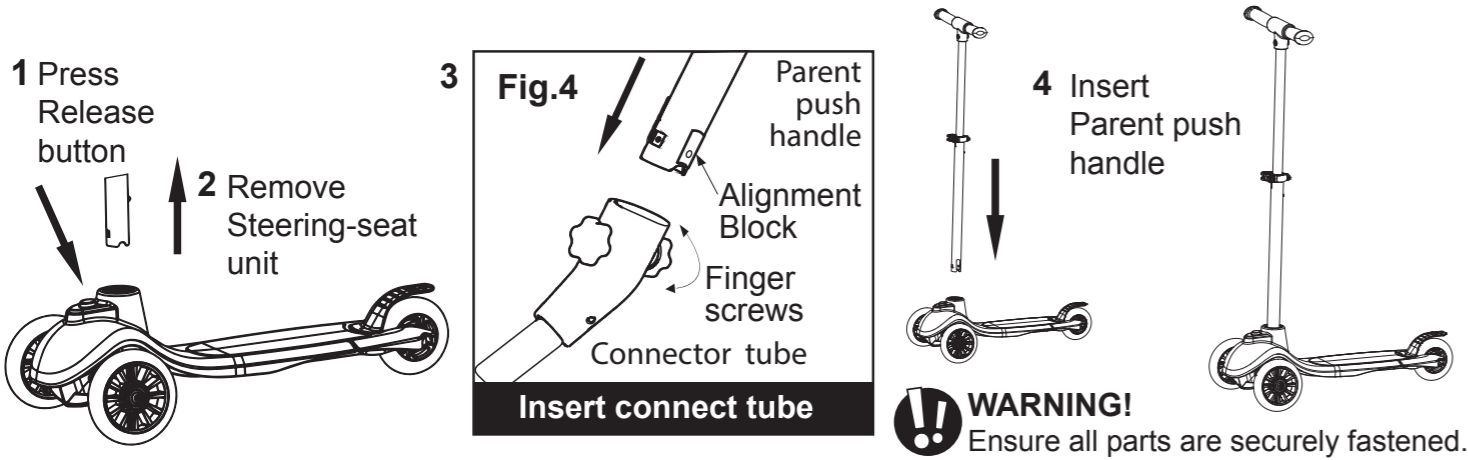


WARNING! Before using the scooter, ensure all parts are securely clipped into position.

4 Normal scooter mode- Assembly

For the older rider, the assembly instructions are similar to the 'Beginners Ride-on mode' but instead of using the steering-seat unit, use the parent push handle.

If the steering-seat unit is assembled then (1) Press the release button on the top of the footplate (2) and remove the steering-seat unit. (3) If assembled remove Connector tube from Parent push handle. (4) Now insert the parent push handle without the connector tube attached to it and push down until it clicks in position.



EN

Attention!

Adult assembly required.

WARNING!

- Age: 1-3 years Maximum weight for ride-on scooter mode: 20kg.
- Protective equipment should be worn. Not to be used in traffic or on public highway.
- Lock the steering for ride-on mode.
- Warning! Ride-on mode is not to be used by children over 36 months due to insufficient strength".
- Age: 2+ years. Maximum weight for beginner scooter mode: 50kg.
- Protective equipment should be worn. Not to be used in traffic or on public highway.
- Lock the steering for beginner scooter mode.

- Age: 4+ years. Maximum weight for normal scooter mode: 50kg.
- Protective equipment should be worn. Not to be used in traffic or on public highway.

- This toy should be used with caution, since skill is required to avoid falls or collisions that may cause injury to the user or others.
- The pull cord and storage bag are a choking hazard. This is only for adult use. They must be removed before allowing a child to play with the scooter.
- Not suitable for children under 36 months. Long cord. Strangulation risk.

NOTE: The screw on the height adjustment clamp on the handlebar stem must not be taken out. This screw is to align the handlebars with the front wheel. If you lose this screw, contact your local store. Do not use until the screw has been replaced.

Scooter brake (Fig.8)

To stop, place foot on rear brake as shown.

Change Wheels:

- To change the wheels, loosen the axle fitting with two Allen keys and remove the wheels from the axle. (Included)
- Allen key can be used to push the bearings out of the wheels in order to use them again in the new wheels.
- Put the bearings into the new wheels with the spacer sleeve and mount them to the frame with the axle screws.
- Make sure that the axle has been screwed on tightly before riding.

Bearings

- Your scooter is equipped with precision ball bearings which were filled with lubrication at high pressure during manufacture.
- The bearings are maintenance free. If they should fail, they should be completely replaced.

Caution!

Check all clamping devices for tightness and foot brake before riding, otherwise the self-locking nuts and other self-locking fixings may lose their effectiveness.

Warning!

- Save this manual for future reference.
- The scooter must be used on surfaces that are flat, clean and dry.
- The scooter must be used away from other road-users.
- To avoid serious injury always wear protective equipment (helmet, elbow guards, knee pads, wrist protectors and gloves).
- Make regular checks of the steering system. Also ensure that all joints and connections are firmly tightened. Check regularly to ensure there are no breaks or cracks anywhere in the scooter.
- Always wear shoes when riding the scooter.
- Scooter must not be used at night.
- Important! Do not touch the braking system after use: risk of burns.
- Do not use the scooter to jump over other objects.
- Do not remove or tamper with the braking system.
- Do not use in wet weather.
- Keep both hands on the handlebars.
- Regular maintenance of your scooter assists with safety.
- Do not make any modification that is not mentioned in the instructions.
- Important! The self-locking bolts and other self-locking parts may lose their efficiency.
- Oil the wheel bearings and joints regularly.
- Remove any sharp projections that may be caused during use.
- Do not use solvents.
- Do not put away when still wet.
- Store in a dry, dust-free place.
- Use of the scooter requires great skill, so as to avoid falls or collisions causing injury to the user and third parties.
- Do not use the scooter on public highways, it is dangerous.

Warning:

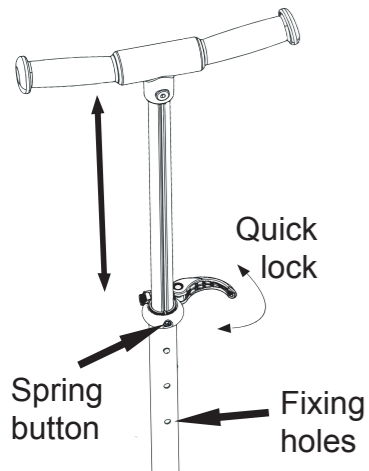
Read the information supplied by the manufacturer. No modification other than to the manufacturer's instruction shall be made.

Care

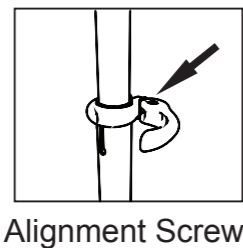
CLEAN WITH A DAMP SOFT CLOTH. DO NOT USE SOLVENTS OR BLEACH FOR CLEANING.

Adjusting the handlebar / Parent push handle

Parent Push Handle



(1) To adjust the height of the handlebar simply loosen the quick lock. (2) Press the spring button in and raise or lower the handlebar to the desired height. The button must pop into the fixing hole.

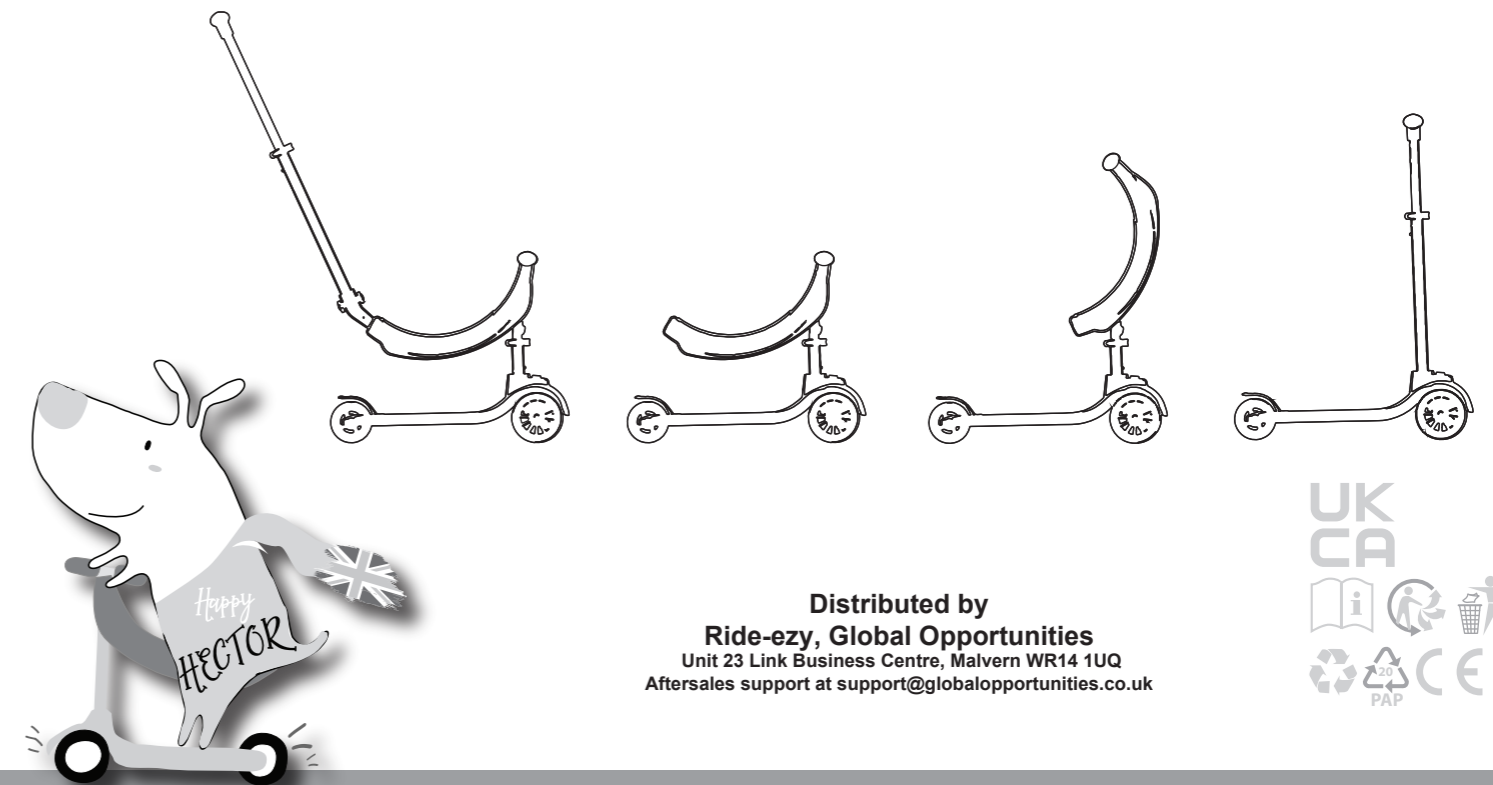
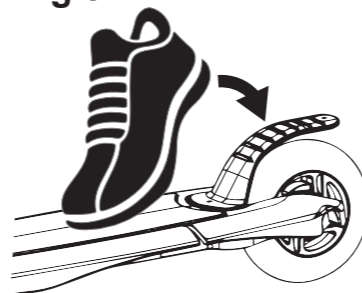


WARNING! The alignment screw on the handlebar quick lock **MUST NOT** be removed. This screw aligns the handlebar to the front wheel.

Scooter brake

Step on the rear-brake pedal to brake.

Fig.8



Distributed by
Ride-ezy, Global Opportunities
 Unit 23 Link Business Centre, Malvern WR14 1UQ
 Aftersales support at support@globalopportunities.co.uk

